

Preservation of cultural heritage: Palmyra

Premodern Digital Cultural Heritage Network
In-Class Presentation

Palmyra - Temple of Bel (destroyed 2015)



Palmyra - Temple of Bel. Autumn 1932. Geography Collections, Radcliffe Science Library, University of Oxford/HEIR Project [ID 51927]



Palmyra - Temple of Bel. September 2010. Andrew Wilson/Manar al-Athar [ID 99204]

More images before the destruction

[Palmyra - Temple of Bel – exterior](#)

[Palmyra - Temple of Bel - interior](#)

Palmyra - Temple of Bel (destroyed 2015)



Palmyra - Temple of Bel. March 2007. Ross Burns/Manar al-Athar [ID 99244]



Palmyra - Temple of Bel. March 2011. Ross Burns/Manar al-Athar [ID 99613]

More images before the destruction

[Palmyra - Temple of Bel - monumental entrance \(propylaea\)](#)

[Palmyra - Temple of Bel - north chamber](#)

[Palmyra - Temple of Bel - south chamber](#)

Palmyra - Temple of Baal Shamin (destroyed 2015)



Palmyra - Temple of Baal Shamin - southwest courtyard. Ross Burns/Manar al-Athar. [ID 100521]



Palmyra - Temple of Baal Shamin. March 2007. Ross Burns/Manar al-Athar [142035].

More images before the destruction
[Palmyra - Temple of Baal Shamin](#)

Palmyra – Tetrapylon (destroyed 2017)



Palmyra - colonnaded streets - Great Colonnade - sector B. April 2010. Ross Burns/Manar al-Athar [ID 101410]



Palmyra – Tetrapylon. March 2011. Ross Burns/Manar al-Athar [ID 98628].
Destroyed 2017.

More images

[Palmyra - colonnaded streets - Great Colonnade - sector B](#)

More images before the destruction

[Palmyra - Tetrapylon](#)

Palmyra – Monumental Arch (destroyed 2015)



Palmyra - Monumental Arch. April 2008.
Ross Burns/Manar al-Athar [ID 98796].
Destroyed 2015

More images before the destruction
[Palmyra - Monumental Arch](#)

Palmyra – Tower Tomb of Elahbel (destroyed 2015); Palmyrene funerary sculpture



Palmyra – Tower Tomb of Elahbel. April 2009. Ludi Lochner/Manar al-Athar [ID 99921]



Palmyra – Tower Tomb of Elahbel. September 2010. Andrew Wilson/Manar al-Athar [ID 99981]



Palmyra – Tower Tomb of Elahbel. December 2005. Jane Chick/Manar al-Athar [ID 100041]



Palmyra funerary monument of 'Ataran, daughter of Iamle, Istanbul Archaeological Museum. Daniel C. Waugh/HEIR Project [ID 74792]

More images

[Palmyra - Valley of Tombs](#)

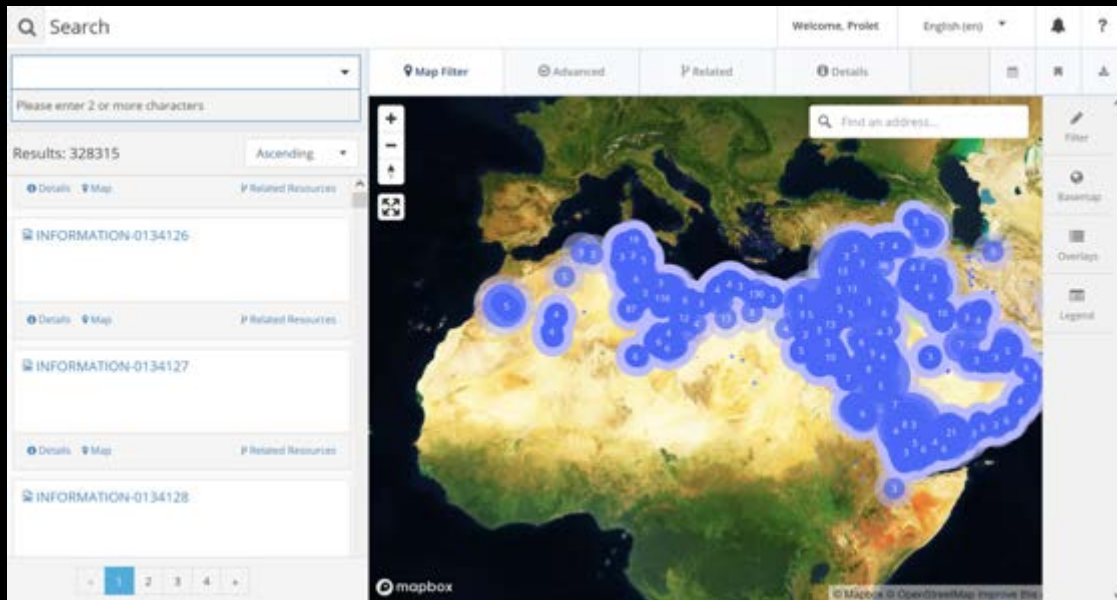
[Palmyra - Tower Tomb of Elahbel](#)

Watch:

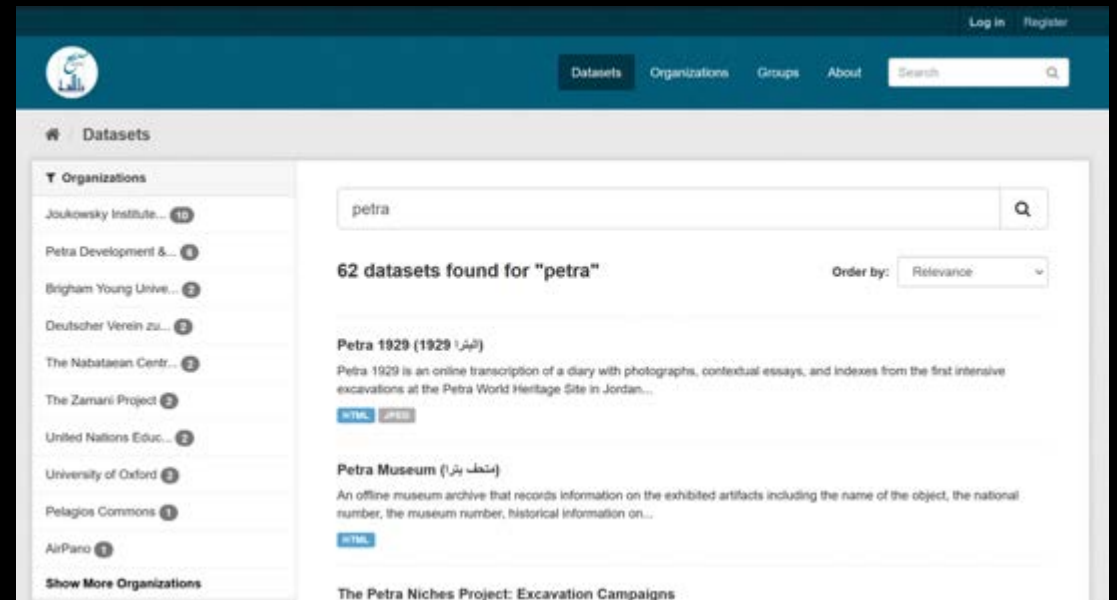
[The Getty. Faces of Ancient Palmyra, 2017](#)

**Search for more
funerary portraits
on [HEIR](#)**

Cultural heritage under threat; Digital projects



Endangered Archaeology in the Middle East and North Africa (EAMENA)



MaDiH: Mapping Digital Cultural Heritage in Jordan

Cultural heritage under threat; Digital projects

The screenshot shows the Manar al-Athar website interface. At the top left is the logo for the University of Oxford and Manar al-Athar. The search results page displays 3,911 results for the keyword 'Palmyra'. The results are organized into a grid of image thumbnails, each with a title and a 'View all' link. The titles include 'Palmyra - Agora', 'Palmyra - Baths of...', 'Palmyra - fountain house...', and 'Palmyra - Monumental Arch...'. On the right side, there is a 'Simple search' box with the search term 'palmyra' and a 'Search' button. Below the search box is a 'Filter' section with a 'Filter' button and a 'Clear' button. The page also includes navigation links for 'Home', 'Search results', and 'Themes'.

Manar al-Athar (Guide to Archaeology)

Exercise:

Look for more photos from Palmyra before the recent destructions via the simple search.

The screenshot shows the HEIR Project website interface. At the top left is the logo for the University of Oxford. The search results page displays 410 results for the keyword 'Palmyra'. The results are organized into a grid of image thumbnails, each with a title and a 'View all' link. The titles include 'InstArchbx127im002...', 'InstArchbx127im006...', 'GEOG: Syria: "Palmy...", and 'InstArchbx127im009...'. On the right side, there is a 'Simple search' box with the search term 'palmyra' and a 'Search' button. Below the search box is a 'Filter' section with a 'Filter' button and a 'Clear' button. The page also includes navigation links for 'Home', 'Search results', and 'Contact us'.

Historic Environment Image Resource (HEIR)

Exercise:

Look for old photos from Palmyra via the simple search.

Digital projects



Log in

Heritage Gazetteer of Libya / SLS Archives

Homepage Search Gazetteer Search Archive About the projects Contact

Advanced search

Refine your search

Text ... Search

Apply filters

Feature



Heritage Gazetteer of Libya
Explore the Gazetteer's [website](#)

Exercise:

The capital of Libya is Tripoli. Use the search field to see what other names Tripoli is called.

What other cities or ancient sites in Libya can you identify?